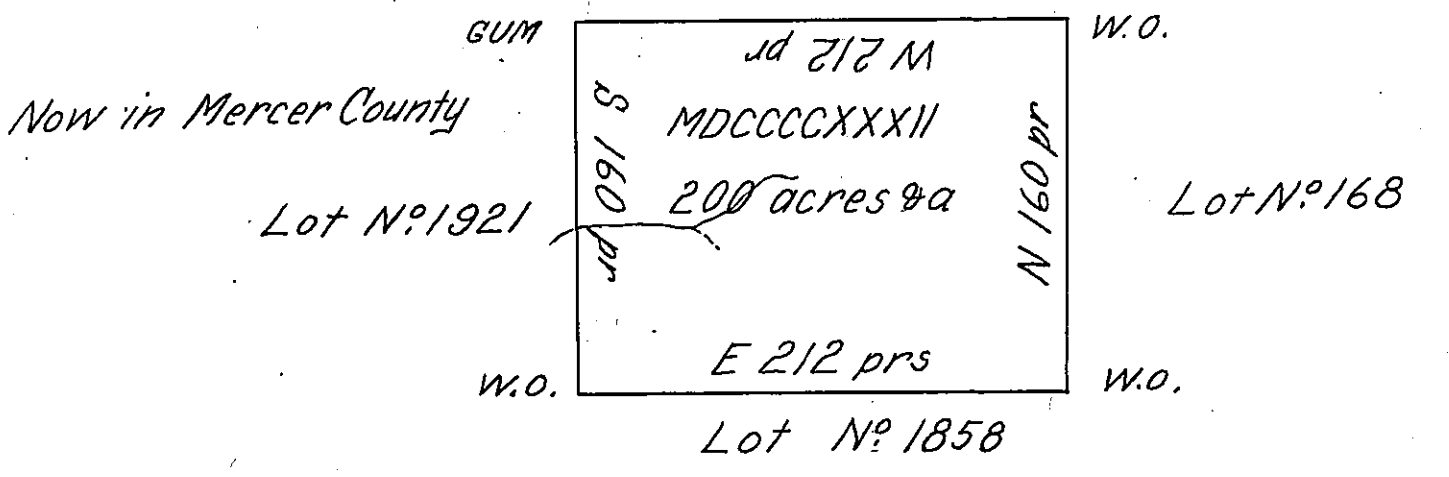


FORM NO 1.

George Moore in right  
of Abraham Bodle Struck  
District March 11<sup>th</sup> 1806  
N<sup>o</sup> 1932

Lot N<sup>o</sup> 1933



In pursuance of an Act of the General Assembly of the State of Pennsylvania, passed the 24th day of February, 1785, entitled "An Act for directing the mode of distributing the Donation Lands promised the Troops by this Commonwealth;" and by order of the Surveyor General, with the approbation of the honorable the Executive Council, I have surveyed, on the 27th day of June, 1786, the above described Tract of Two hundred Acres of Land, and allowance for roads &c. N<sup>o</sup> 1932, situate in District N<sup>o</sup> 2, on the west side of the Alleghany river in the County of Westmoreland.

To John Lukens, Esquire }  
Surveyor General }

G. Evans  
D. Survy?

IN TESTIMONY that the above is a copy of the original remaining on file in the Department of Internal Affairs of Pennsylvania, made conformably to an Act of Assembly approved the 16th day of February, 1833, I have hereunto set my Hand and caused the Seal of said Department to be affixed at Harrisburg, this twenty-third day of April 1907

*Isaac B. Hoover*  
Secretary of Internal Affairs.